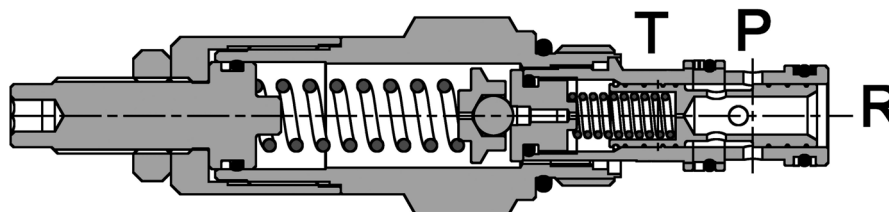
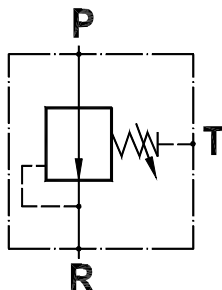


**Valvola di riduzione pressione pilotata**  
**Pressure reducing valve, pilot operated**

Rev.01-2010/02



**SPECIFICHE TECNICHE**

**Materiali:** cartuccia in acciaio zincato, parti interne in acciaio trattato termicamente.

**Portata:** 50 l/min

**Taratura max.:** 250 bar

**Pressione max.:** 350 bar

**Pressione differenziale max. tra R e P:** 200 bar

**Regolazione pressione:** mediante vite

**TECHNICAL SPECIFICATIONS**

**Materials:** cartridge in steel zinc plated, internal parts are in hardened steel.

**Rated flow:** 50 l/min

**Max. setting:** 250 bar

**Max. inlet pressure:** 350 bar

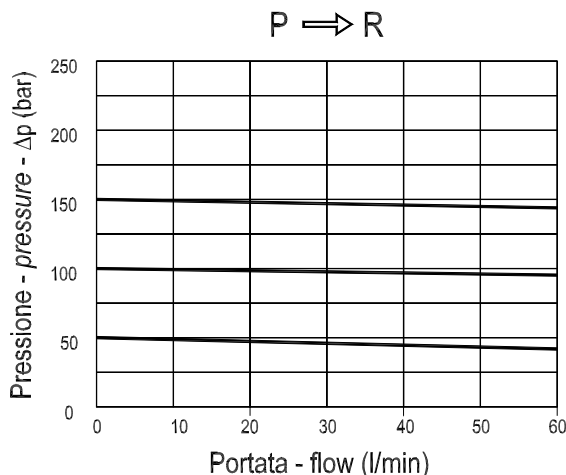
**Max. differential pressure between R and P:** 200 bar

**Adjustement means:** leakproof screw

**DIAGRAMMA PERDITE DI CARICO - PRESSURE DROP CURVES**

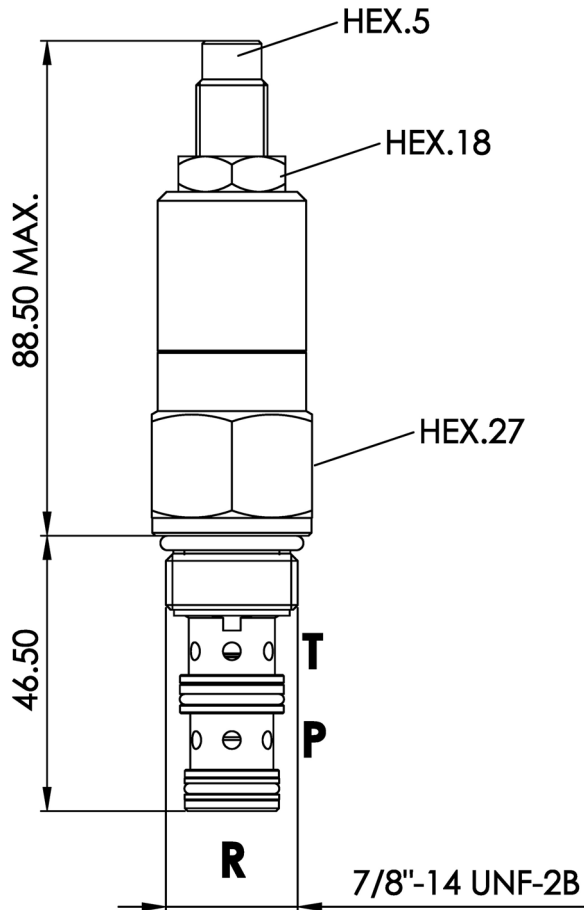
Viscosità olio 24 mm<sup>2</sup>/sec. (3,5 °E)  
 Temperatura 50 °C

Oil viscosity 24 mm<sup>2</sup>/sec. (3,5 °E)  
 Temperature 50 °C



**Valvola di riduzione pressione pilotata**  
**Pressure reducing valve, pilot operated**

Rev.01-2010/02



MOLLE - SPRINGS				*
Codice Code	Campo taratura min.-max. bar Adjustable pressure range bar	Increment. press. bar/ giro vite Pressure increase bar/turn	Taratura standard bar Standard setting bar	Colore Color
10	14 - 140	/	14	/
20	15 - 250	/	15	/

TIPO TYPE	CAVITA' CAVITY	COPPIA DI SERRAGGIO INSTALLATION TORQUE	PESO WEIGHT
		Nm	Kg
FPRP P SR 60 C	33101	27 - 30	0.260

**ESEMPIO DI ORDINAZIONE - ORDERING CODE EXAMPLE**

**F P R P** **P** **S R** **6 0** **C** **P** **2 0**

\_\_\_\_\_ "10" / "20": \*  
 Campi di taratura pressione - Adjustable pressure range